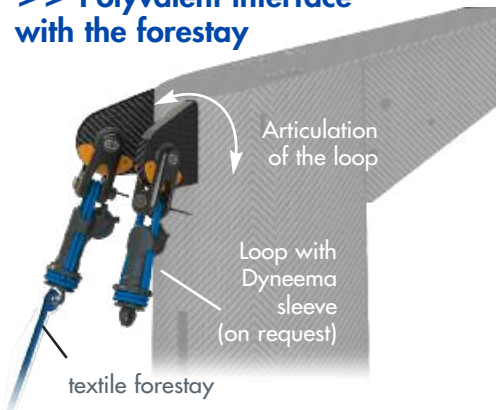




Alternatively, the halyard locking device can be fitted on a mast chain plate. Among those external locks we distinguish two types : the two-in-one locking swivels and the locks attached by a loop.

>> Polyvalent interface with the forestay



The benefits of the lock :

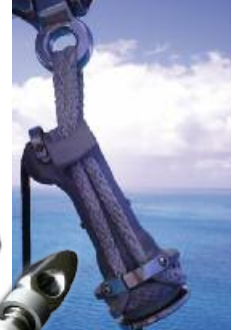
"Thanks to the lock, we can lower the furled staysail in order to tack or jibe easily, or even to reduce windage. Moreover, the locked stay-sail presents various advantages in comparison with a fixed forestay : sail furling, tight luff, easy handling. With the lock, hoisting and lowering the staysail is quick and so easy".

Halvard Mabire, skipper of the Class 40' Campagne 2 France and facnor technical partner

EXTERNAL LOCKS WITH LOOP BODY

>> Fixed locking device and mobile pin :

- Easy & simply fitted : it can be fixed onto the head attachment with an articulated device (toggle, latching, Unibal ball or others).
- The halyard (small ø) can then run down inside or outside the mast.



16 tons lock for Maricha III (147') Code zero



>> Swivel & lock technical features

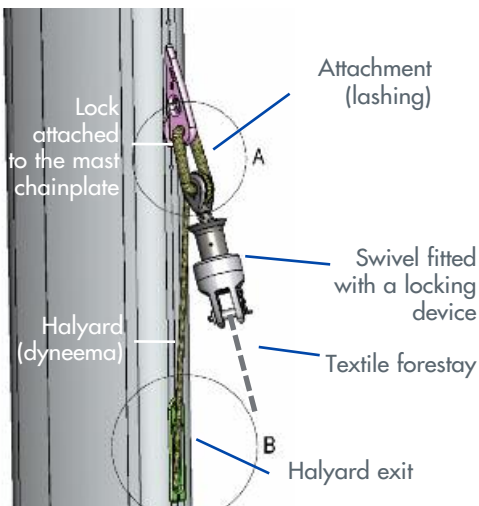
Parameters / Lock model* (= working load)	HE 3 T	HE 5 T	HE 7 T	HE 10 T	HE 12 T	HE 16 T	HE 24 T	HE 30 T+
Kevlar Equivalent wire	10 T	14 T	20 T	30 T	40 T	54 T	75 T	100 T
ROD Equivalent	#12	#17	#22	#40	#48	#60	#76 #90	#115 #150

EXTERNAL LOCKS : SWIVEL & LOCK

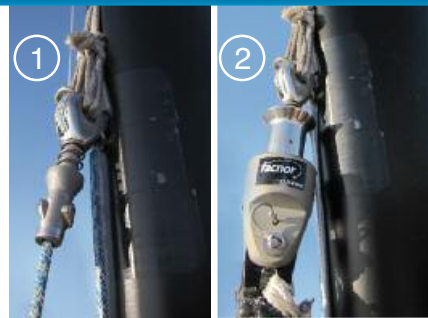
>> Locking Swivels with fixed pin / removable swivel

Pin attached to chain plate (fig 1), the body of the locking swivel flies from the deck – for instance from the bag - to the top of the mast to get secured (fig2)

>> Swivel & lock : Double function, compact and light

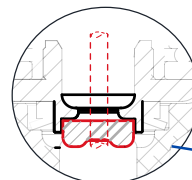


Halyard partially without outer shell on 1.1 to 1.2x the luff length



>> Swivel & lock technical features

Parameters / Lock model* (= working load)	2 T	7 T	9 T	9 T+
Kevlar Equivalent wire	8 T	20 T	27 T	Please contact us
ROD Equivalent	#10	#30	#40	



A Dogbone blocks the halyard in the swivel

