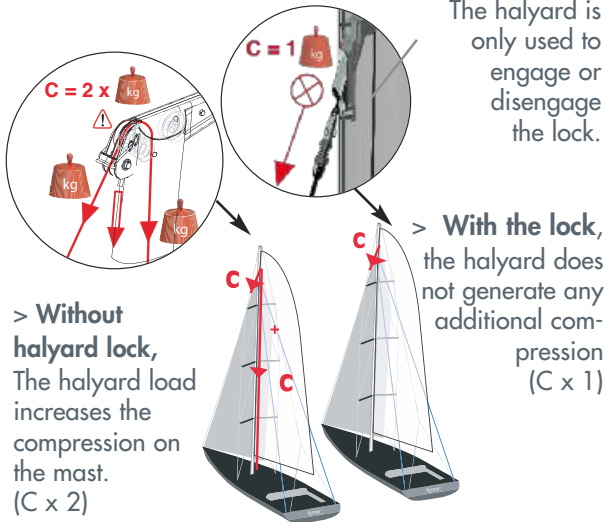




High resistance body Halyard locks improve flying sail use (Staysail/Gennaker) saving weight and reducing mast compression loads. This simple and efficient device makes the halyard locking/unlocking easy and safe. The Facnor lock tremendously eases the handling of flying fores-tays (2-to-1 no longer required). It can be fitted either inside or outside the mast.

### BUILD INTO MAST FRONT



### >> Halyard / Mast : 50% reduced load

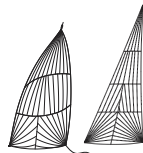
With the locking device, the halyard load is transferred to the lock, reducing nearly by half this compression and allowing lighter mast.

### >> Reduction of the boat heel/windage

widely fitted on raceboats, the lock reduces the boat heel and windage, even in cruising.

### Different possibilities of use :

- Gennaker or code zero
- Staysail fitted on textile forestay
- Staysail fitted on furler with flying wire forestay



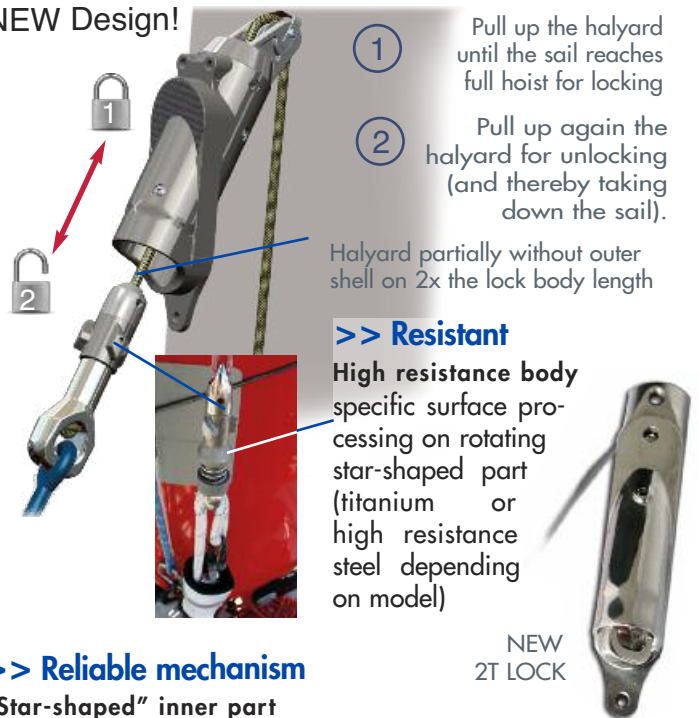
### >> Luff constantly tight

Constant tension : wind pressure increases are not absorbed by the halyard elasticity.

### >> Large range

from 2T (new design) up to 50 T

### NEW Design!



### >> Reliable mechanism

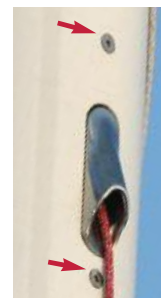
#### "Star-shaped" inner part

The rotating ring is fitted with three projecting blocks that adjust themselves in the body of the mast part.

### >> Easy installation and inspection

#### Optimum integration of the lock into the mast

- device fitted from outside the mast;
- mast cut following a jig;
- the integrated part that bears; sail load is fixed on the mast face only by two screws thanks to a clever design;



### >> Options :

#### Fitted-in sensors :

- « upwards stop » and « locked »

#### Various terminals available (see page 27)

- With toggle directly fitted-in (swivel)



### >> Internal halyard HL locks technical features

Parameters / Lock model* (= working load)	HL 2 T	HL 3 T	HL 5 T	HL 7 T	HL 10 T	HL 12 T	HL +
Kevlar equivalent wire	7 T	10 T	14 T	20 T	30 T	40 T	on request
ROD equivalent	#8	#12	#17	#22	#40	#48	
Wire equivalent 1x19 (mm/inch)	7 (9/32")	8 (5/16")	10 (3/8")	12 (1/2")	16 (5/8")	19 (3/4")	
Dyform equivalent (mm)	6	7	8	10	14	16	

\*\* model name = Kevlar stay breaking loads (see structural furler mention)

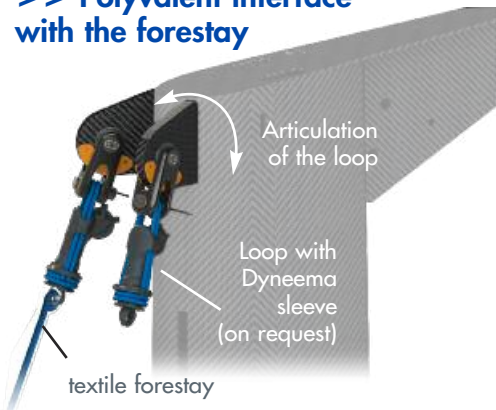
See the video on **YouTube** <https://youtu.be/2V9NX9SgFvA>





Alternatively, the halyard locking device can be fitted on a mast chain plate. Among those external locks we distinguish two types : the two-in-one locking swivels and the locks attached by a loop.

>> Polyvalent interface with the forestay



The benefits of the lock :

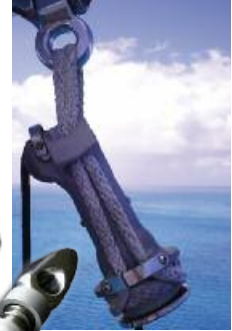
"Thanks to the lock, we can lower the furled staysail in order to tack or jibe easily, or even to reduce windage. Moreover, the locked stay-sail presents various advantages in comparison with a fixed forestay : sail furling, tight luff, easy handling. With the lock, hoisting and lowering the staysail is quick and so easy".

Halvard Mabire, skipper of the Class 40' Campagne 2 France and facnor technical partner

EXTERNAL LOCKS WITH LOOP BODY

>> Fixed locking device and mobile pin :

- Easy & simply fitted : it can be fixed onto the head attachment with an articulated device (toggle, latching, Unibal ball or others).
- The halyard (small ø) can then run down inside or outside the mast.



16 tons lock for Maricha III (147') Code zero



>> Swivel & lock technical features

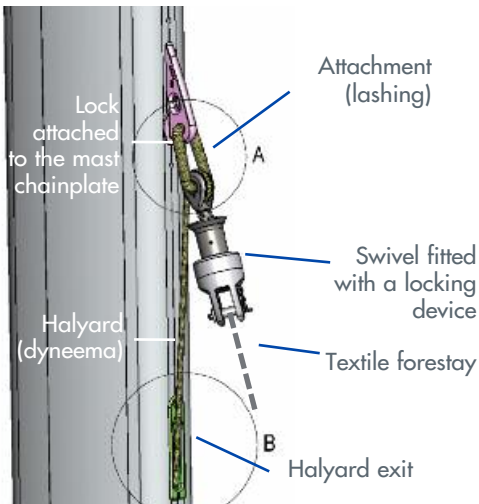
Parameters / Lock model* (= working load)	HE 3 T	HE 5 T	HE 7 T	HE 10 T	HE 12 T	HE 16 T	HE 24 T	HE 30 T+
Kevlar Equivalent wire	10 T	14 T	20 T	30 T	40 T	54 T	75 T	100 T
ROD Equivalent	#12	#17	#22	#40	#48	#60	#76 #90	#115 #150

EXTERNAL LOCKS : SWIVEL & LOCK

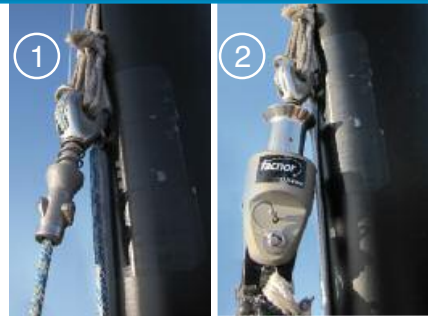
>> Locking Swivels with fixed pin / removable swivel

Pin attached to chain plate (fig 1), the body of the locking swivel flies from the deck – for instance from the bag - to the top of the mast to get secured (fig2)

>> Swivel & lock : Double function, compact and light

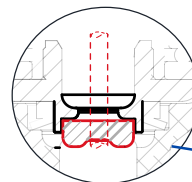


Halyard partially without outer shell on 1.1 to 1.2x the luff length



>> Swivel & lock technical features

Parameters / Lock model* (= working load)	2 T	7 T	9 T	9 T+
Kevlar Equivalent wire	8 T	20 T	27 T	Please contact us
ROD Equivalent	#10	#30	#40	



A Dogbone blocks the halyard in the swivel

