

High resistance body Halyard locks improve flying sail use (Staysail/Gennaker) saving weight and reducing mast compression loads. This simple and efficient device makes the halyard locking/unlocking easy and safe. Fitted either inside or outside the mast, the Facnor lock tremendously eases the handling of flying forestays.

New!



BUILT INTO MAST FRONT

HL & HLA

- Halving mast compression loads
- Luff constantly tight (less halyard elasticity)
- Easier foredeck handlings
- Different possibilities of use : Code sails & Staysail
- Reduction of the boat heel/windage (lowered sail)

>> New HLA

- > Aluminium body
- > Lighter (60%)
- > Reliable : bottom/entry of the lock is made of Stainless steel in order to protect this area from the entry of the spigot

>> Halyard /locking control

Halyard partially without outer shell on 2 x the lock body length

>> Optimum integration of the lock

- device fitted from outside the mast;
- lock supported by the mast contact area;
- easy mast inspection, fixation by two screws;



>> High resistance body : Stainless steel (HL) or aluminium (new HLA)

1 Pull up the halyard until the sail reaches full hoist for locking

>> Reliable mechanism

“Star-shaped” inner part
- The rotating ring is fitted with three projecting blocks that adjust themselves in the body of the mast part.
- specific surface processing

2 Pull up again the halyard for unlocking (and thereby taking down the sail).



>> Options “Sensor”:

Some models (5T or +) can be specially equipped with fitted-in sensors “upwards stop” and “locked”, various terminals available (see page 27)

>> Bullet lock:

Aluminium body, pin and sheave in S/steel
Used for wide angulation halyard

HBL Lock model*	HBL 2T	HBL 3T	HBL 5T	HBL 8T
Working load	2T	3T	5T	8T



>> Internal halyard HL & HLA locks technical features

HL Lock model*	HL 2T	HL 3T	HLA 5T	HLA 8T	HL 10T	HLA 12T	HL +
Working load	2 T	3 T	5 T	8 T	10 T	12 T	on request

* model name = Kevlar stay breaking loads (see structural furler mention)

HL (stainless steel) HLA (aluminium)



Alternatively, the halyard locking device can be fitted on a mast chain plate. Among those external locks we distinguish two types : the two-in-one locking swivels and the locks attached by a loop.

HE EXTERNAL LOCKS WITH LOOP BODY

>> Fixed locking device & mobile pin :

- Easily fitted : Only minor mast modifications. Can be fixed onto the head attachment with a textile attachment (loop lashings).
- The halyard (small ø) can then run down inside or outside the mast.



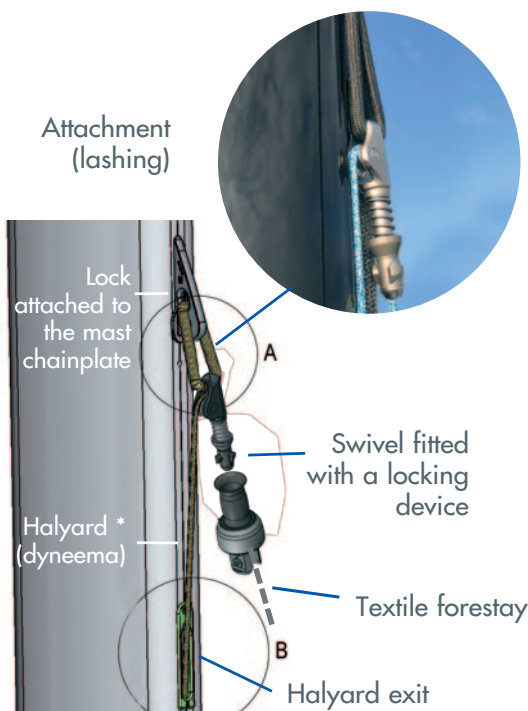
New HEL
with Aluminium body
> New design
> More compact and lightweight
> 3T / 5T / 8T



The benefits of the lock :

"Thanks to the lock, we can lower the furled staysail in order to tack or jibe easily, or even to reduce windage. Moreover, the locked staysail presents various advantages in comparison with a fixed forestay : sail furling, tight luff, easy handling. Hoisting and lowering the staysail is quicker and easier". Halvard Mabire, skipper & Facnor technical partner since 30 years

>> Swivel lock : Double function



* Halyard partially without outer shell on 1.1 to 1.2 x the luff length

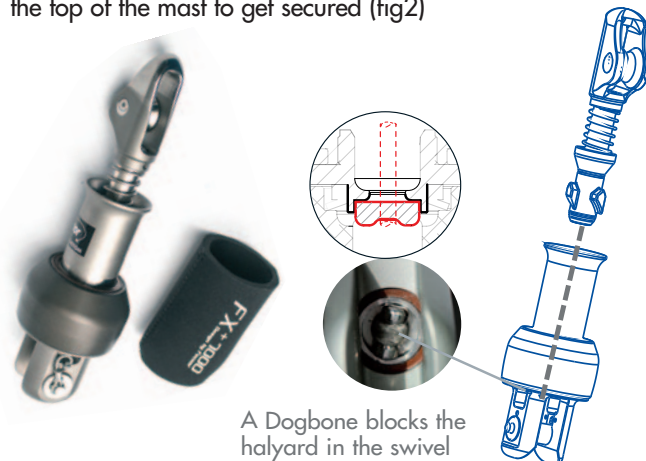
>> HE & HEL Swivel & lock technical features

HE & HEL Lock model*	HEL 3T	HEL 5T	HEL 8T	HEL 10T	HE 12T	HE 16T	HE 24T	HE 30T+
Working load	3 T	5 T	7 T	10 T	12 T	16 T	24 T	30 T

EXTERNAL LOCKS : SWIVEL LOCK

>> Locking Swivels with fixed pin / removable swivel

Pin attached to chain plate (fig 1), the body of the locking swivel flies from the deck – for instance from the bag - to the top of the mast to get secured (fig2)



>> HSW Swivel & lock technical features

HSW Lock model*	2 T 5*	4 T*	5 T	7 T	10 T	+10T
Working load	2 T 5	4 T	5 T	7 T	10 T	Please contact us

* HSW 2T5 & 4 T = different model compared to the photo above